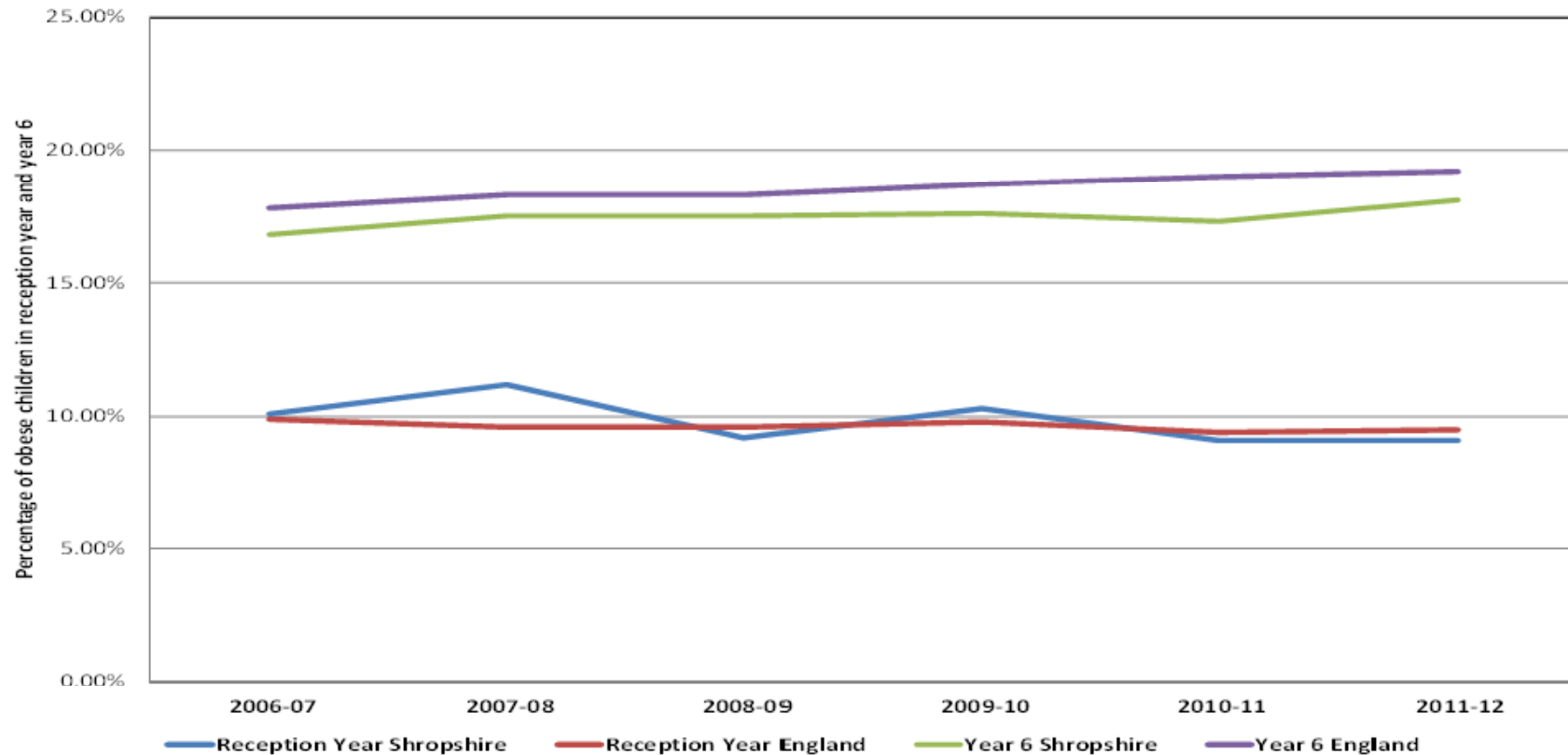


# Presentation on Children and Young People's Health

# Child and Maternal Health Intelligence Network Profiles

	Indicator	Local no. per year	Local value	Eng. ave.	Eng. worst		Eng. best
Preventable mortality	1 Infant mortality rate	11	3.8	4.4	8.0		2.2
	2 Child mortality rate (age 1-17 years)	9	13.6	13.7	23.7		7.5
Health protection	3 MMR immunisation (by age 2 years)	2,748	95.4	91.2	78.7		97.2
	4 Diphtheria, tetanus, polio, pertussis, Hib immunisations (by age 2 years)	2,825	98.0	96.1	85.7		98.8
	5 Children in care immunisations	125	89.3	83.1	0.0		100.0
	6 Acute sexually transmitted infections (including Chlamydia)	839	23.6	35.6	75.2		19.9
Wider determinants of ill health	7 Children achieving a good level of development at age 5	1,933	67.7	63.5	51.5		76.5
	8 GCSE achieved (5A*-C inc. Eng and maths)	1,830	58.6	59.4	40.9		79.6
	9 GCSE achieved (5A*-C inc. Eng and maths) for children in care	-	-	14.6	0.0		40.0
	10 Not in education, employment or training (age 16-18 years)	480	5.2	6.1	11.8		1.6
	11 First time entrants to the Youth Justice System	153	514.3	876.4	2,436.3		342.9
	12 Children living in poverty (aged under 16 years)	6,755	13.6	21.1	45.9		7.4
	13 Family homelessness	206	1.7	1.7	7.4		0.1
	14 Children in care	205	34.0	59.0	150.0		19.0
	15 Children killed or seriously injured in road traffic accidents	6	12.1	22.1	47.9		4.4
Health improvement	16 Low birthweight	186	6.4	7.4	11.0		5.0
	17 Obese children (age 4-5 years)	225	9.1	9.5	14.5		5.8
	18 Obese children (age 10-11 years)	443	17.6	19.2	27.8		12.3
	19 Participation in at least 3 hours of sport/PE	16,850	49.2	55.1	40.9		79.5
	20 Children's tooth decay (at age 12)	-	0.8	0.7	1.5		0.2
	21 Teenage conception rate (age under 18 years)	131	23.9	35.4	64.7		6.2
	22 Teenage mothers (age under 18 years)	42	1.6	1.3	2.8		0.3
	23 Hospital admissions due to alcohol specific conditions	30	50.4	55.8	138.3		16.9
	24 Hospital admissions due to substance misuse (age 15-24 years)	23	69.7	69.4	186.3		25.7
Prevention of ill health	25 Smoking in pregnancy	372	15.0	13.2	29.7		2.9
	26 Breastfeeding initiation	1,876	75.6	74.0	41.8		94.3
	27 Breastfeeding at 6-8 weeks	1,221	43.8	47.2	19.7		82.8
	28 A&E attendances (age 0-4 years)	4,146	276.1	483.9	1,187.4		136.3
	29 Hospital admissions due to injury (age under 18 years)	713	116.4	122.6	211.1		72.4
	30 Hospital admissions for asthma (age under 19 years)	104	159.8	193.9	484.4		73.4
	31 Hospital admissions for mental health conditions	30	49.0	91.3	479.7		22.6
	32 Hospital admissions as a result of self-harm	93	151.8	115.5	311.9		26.0

# Trends in childhood obesity in Shropshire and England



Source: National Childhood Measurement Programme, 2006-07, 2007-08, 2008-09, 2009-10 and 2010-11, 2011-12

# Trends in childhood obesity in Shropshire and England

	<b>Reception</b>					
	<b>2006-07</b>	<b>2007-08</b>	<b>2008-09</b>	<b>2009-10</b>	<b>2010-11</b>	<b>2011-12</b>
<b>Shropshire</b>	10.10%	11.20%	9.20%	10.30%	9.10%	9.10%
<b>Target</b>	N/A	9.90%	9.80%	9.60%	N/A	N/A
<b>England</b>	9.90%	9.60%	9.60%	9.80%	9.40%	9.50%
	<b>Year 6</b>					
	<b>2006-07</b>	<b>2007-08</b>	<b>2008-09</b>	<b>2009-10</b>	<b>2010-11</b>	<b>2011-12</b>
<b>Shropshire</b>	16.80%	17.50%	17.50%	17.60%	17.30%	18.10%
<b>Target</b>	N/A	16.50%	16.40%	16.20%	N/A	N/A
<b>England</b>	17.80%	18.30%	18.30%	18.70%	19.00%	19.20%

*Source: National Childhood Measurement Programme, 2006-07, 2007-08, 2008-09, 2009-10 and 2010-11, 2011-12*

# Obese children in Shropshire towns by age

Local Authority Parish 2011/12	Reception year			Year 6		
	Number obese	% obese	Statistical difference to Shropshire	Number obese	% obese	Statistical difference to Shropshire
Albrighton PC	<5	11.8%	Similar	7	26.9%	Similar
Baschurch PC	<5	8.7%	Similar	<5	15.0%	Similar
Bishop's Castle PC	<5	25.0%	Similar	<5	28.6%	Similar
Bridgnorth PC	7	7.4%	Similar	16	15.8%	Similar
Broseley PC	5	26.3%	Similar	<5	21.4%	Similar
Church Stretton PC	0	0.0%	..	<5	25.0%	Similar
Cleobury Mortimer PC	<5	12.5%	Similar	<5	4.8%	Similar
Craven Arms PC	<5	12.5%	Similar	<5	14.3%	Similar
Ellesmere Urban PC	<5	12.9%	Similar	<5	8.0%	Similar
Highley PC	0	0.0%	..	<5	6.7%	Similar
Ludlow PC	5	8.8%	Similar	9	14.8%	Similar
Market Drayton PC	7	11.9%	Similar	10	20.8%	Similar
Minsterley PC	<5	16.7%	Similar	0	0.0%	..
Much Wenlock PC	<5	7.1%	Similar	<5	16.0%	Similar
Oswestry PC	10	8.6%	Similar	26	23.6%	Similar
Pontesbury PC	<5	5.4%	Similar	7	30.4%	Similar
Shifnal PC	<5	12.0%	Similar	<5	28.6%	Similar
Shrewsbury Area	43	7.4%	Similar	96	17.2%	Similar
Wem Urban PC	<5	7.8%	Similar	18	31.6%	Higher
Whitchurch Urban PC	<5	6.6%	Similar	12	16.0%	Similar
Rural areas	117	9.7%	Similar	225	17.9%	Similar
<b>Shropshire</b>	<b>228</b>	<b>9.1%</b>	<b>Similar</b>	<b>450</b>	<b>18.1%</b>	<b>Similar</b>

Source: National Childhood Measurement Programme 2011-12